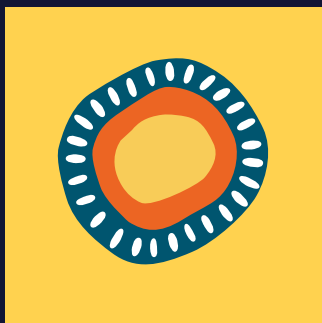


SERVICES AND INFORMATION







CONTENTS

About ALSWA5

ALSWA History.....5

Legal Support and Representation

Civil Law and Human Rights Law7

Criminal Law.....9

Family Law – Care and Protection11

Conflict of Interest11

Additional Services

Bail Support Service (BSS) and
Prison In-Reach Legal Service (PIR)13

Community Legal Education (CLE)15

Law Matters Radio Program15

Media and Public Relations.....15

Custody Notification Service (CNS)17

Custody Wellbeing Service (CWS).....19

Old Ways, New Ways (OWNW)21

Work and Development Permit
(WDP) Service.....23

Youth Engagement Program (YEP).....25

Family and Domestic Violence
Hubs/Healing Services27





About ALSWA

The Aboriginal Legal Service of WA Limited (ALSWA) is an Aboriginal Community-Controlled Organisation (ACCO) and is the leading provider of specialist legal advice, support services and advocacy for First Nations Peoples in Western Australia.

ALSWA works in collaboration and partnership with communities and key government and non-government partners to rectify legal policies and practices that impact adversely and disproportionately on the legal and human rights of WA's First Peoples.

A not-for-profit organisation, ALSWA is governed by a Board of Directors who are all Aboriginal.

The cultural values of Care, Share and Respect form the foundation of ALSWA and underpin ALSWA's commitment to clients, families and communities.

ALSWA's Executive Management Team is responsible for the day to day management of the organisation, its staff and twelve statewide offices.

Embracing a human rights based approach, ALSWA's professional and culturally appropriate service delivery model ensures that Aboriginal and Torres Strait Islander Peoples feel comfortable accessing the service.

ALSWA is a public company limited by guarantee registered with the Australian Securities and Investment Commission. ALSWA is also a public benevolent institution registered with the Australian Charities and Not-for-profits Commission.

ALSWA History

ALSWA is proud of its long history in striving for justice and is guided by the principles of Human Rights, Lore, Leadership, Integrity, Diversity and Unity.

The growth and development of ALSWA would not have been possible without the commitment and dedication of so many community members and supporters since the late 1960's.

ALSWA has been striving for justice for First Nations Peoples for over 50 years.



Legal Support and Representation

Civil Law and Human Rights Unit

The Civil Law and Human Rights Unit empowers the Aboriginal community by providing culturally secure legal advice and representation in:

- Coronial investigations and inquests
- Racial discrimination (including complaints in relation to overt differential treatment on the basis of race and the use of racial slurs)
- Police accountability (including complaints and/or civil action including personal injuries claims)
- Prisoners' rights (including complaints and/or civil action in relation to serious incidents of poor treatment and discrimination)
- Young people in the justice system
- Government accountability (including complaints and/or civil action against the Public Transport Authority and other government agencies in relation to serious incidents of poor treatment and discrimination)
- False imprisonment (including claims for unlawful detention by police and prisons)

Staff from the Civil Law and Human Rights Unit are Perth based but provide a statewide service which includes outreach trips to regional areas on a regular basis.

Clients with special or complex needs are given priority, especially whose situations prevent them from representing themselves and where unfairness or injustice to them would result in the event we did not assist.

The Civil Law and Human Rights Unit also undertakes national and international human rights policy work and law reform.



Legal Support and Representation

Criminal Law – Perth Criminal Law Unit and ALSWA Regional Offices

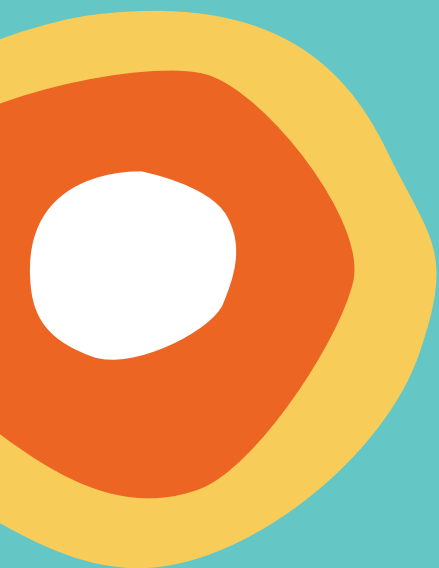
Lawyers and Court Officers* in ALSWA's Perth Criminal Law Unit and in each of ALSWA's regional offices provide a comprehensive range of criminal law services to clients in the Magistrates Court, Children's Court, District Court and Supreme Court.

Advice and representation is provided for every type of court matter, including remands, bail applications, sentencing hearings, pleas of not guilty, jury trials and appeals.

ALSWA lawyers and Court Officers* also visit clients in metropolitan and regional prisons as well as Banksia Hill Detention Centre.

ALSWA strives to provide a culturally secure legal service and where needed will inform courts of cultural matters and obligations, language and communication issues and customary law.

**ALSWA Court Officers are Aboriginal people who advise and act for Aboriginal and Torres Strait Islander Peoples in WA Courts under a certificate granted under section 48 of the Aboriginal Affairs Planning Authority Act 1972 (WA).*



Legal Support and Representation

Family Law and Child Protection

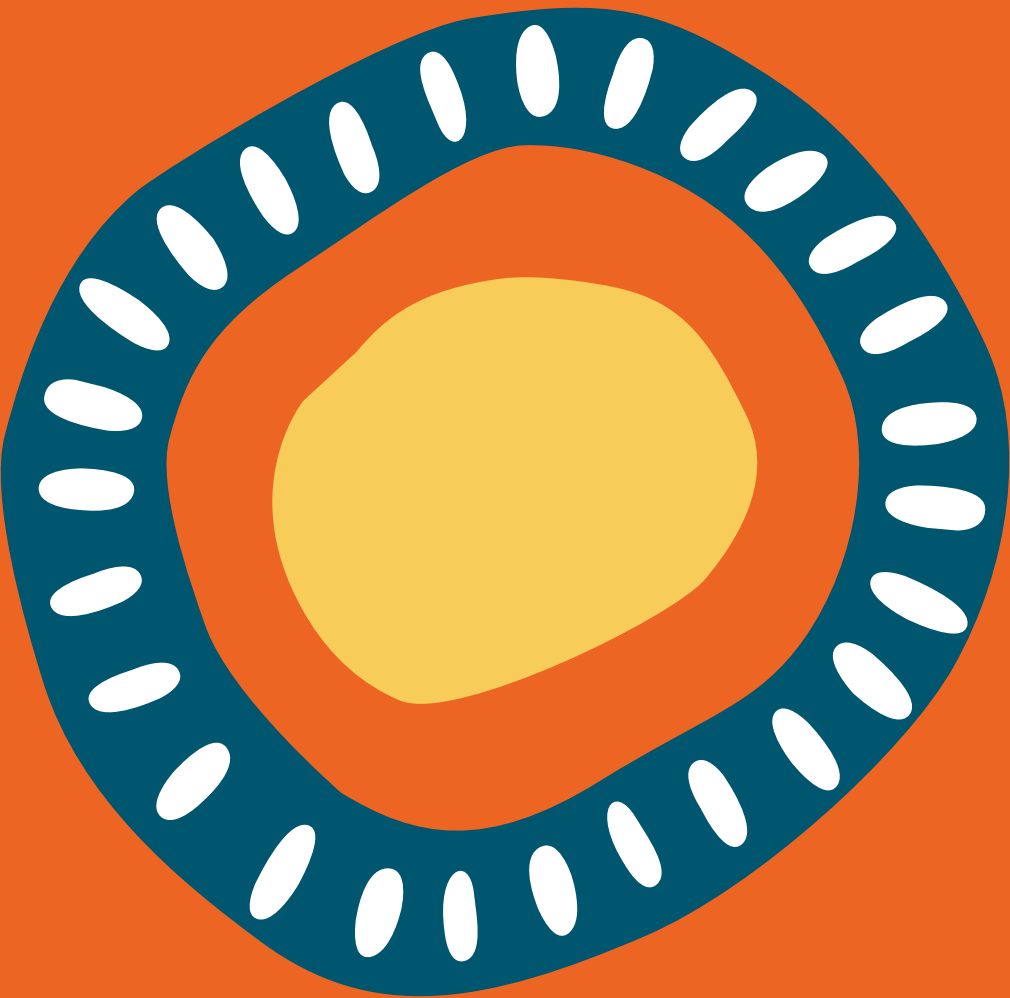
ALSWA assists parents or family members if child protection becomes involved. This could be when child protection are trying to remove a child or have already removed a child from a family. ALSWA can represent parents or family in the Children's Court when child protection ask the Court to make a protection order for a child or can assist at pre-birth meetings if child protection are thinking about how to protect the baby.

Assistance may also be provided in Family Court child parenting matters, if capacity allows.

ALSWA helps family members come to an agreement that is best for the child/children without going to the Family Court (where possible) and can provide referrals to mediation services.

Conflict of Interest

A conflict of interest can occur if ALSWA is acting or has acted for another person involved in a legal matter. For example, a conflict of interest will usually exist if a client is charged with an assault on their partner and ALSWA is already acting for the partner in a child protection case. If this happens, ALSWA will try to refer the client to another legal provider.



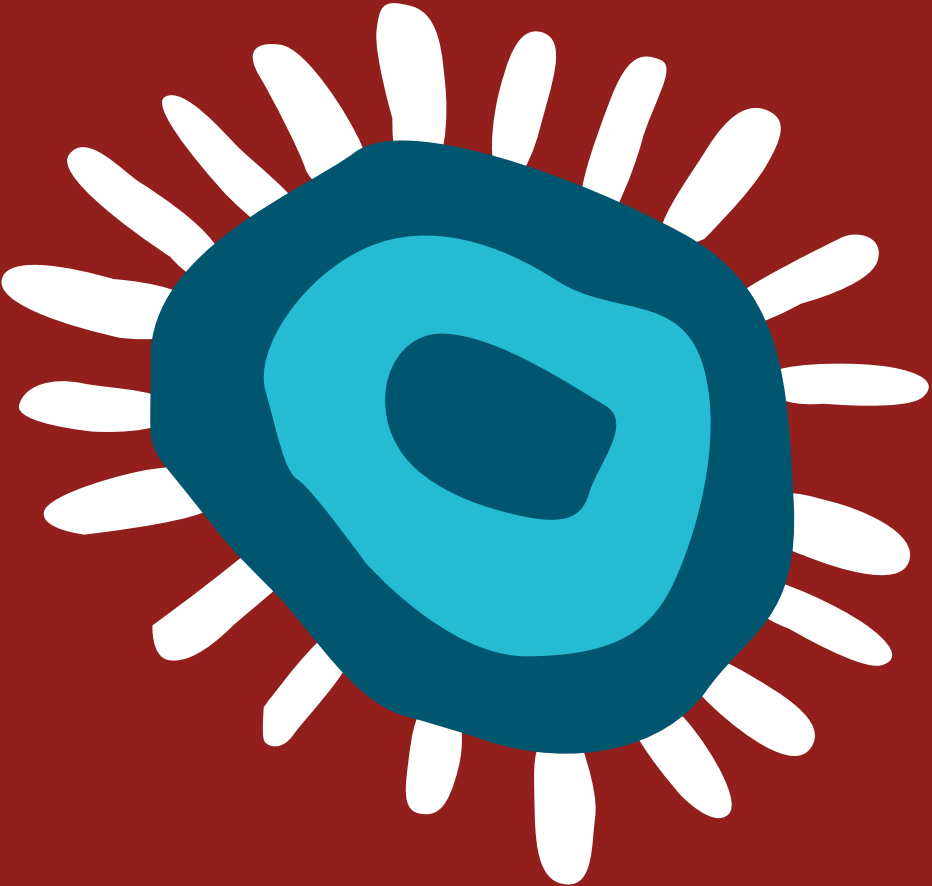
Additional ALSWA Services

Bail Support Service (BSS) and Prison In-Reach Legal Service (PIR)

The objective of the Bail Support Service/Prison In-Reach Legal Service (BSS/PIR) is to reduce avoidable remand by providing eligible adult clients earlier access to bail through creating suitable bail plans or helping to identify surety options. BSS/PIR support eligible clients who are on bail by helping clients comply with their bail conditions as well as supporting clients' general needs such as:

- assistance locating accommodation;
- referrals for counselling and employment/training; and
- help to access mental health and NDIS supports.

The Bail Support Service operates in Perth and Broome. Eligible clients for Perth are ALSWA clients who have matters in the Perth Magistrates Court and Perth District Court and, for Broome, ALSWA clients with matters in the Broome or Derby Magistrates Court and District Court.



Additional ALSWA Services

Community Legal Education (CLE)

ALSWA strives to advance the legal rights of Aboriginal and Torres Strait Islander Peoples through its delivery of Community Legal Education (CLE) in Perth and regional WA.

ALSWA welcomes enquiries about opportunities to participate in CLE activities. An application form can be found at **www.als.org.au** or email **CLE@als.org.au**

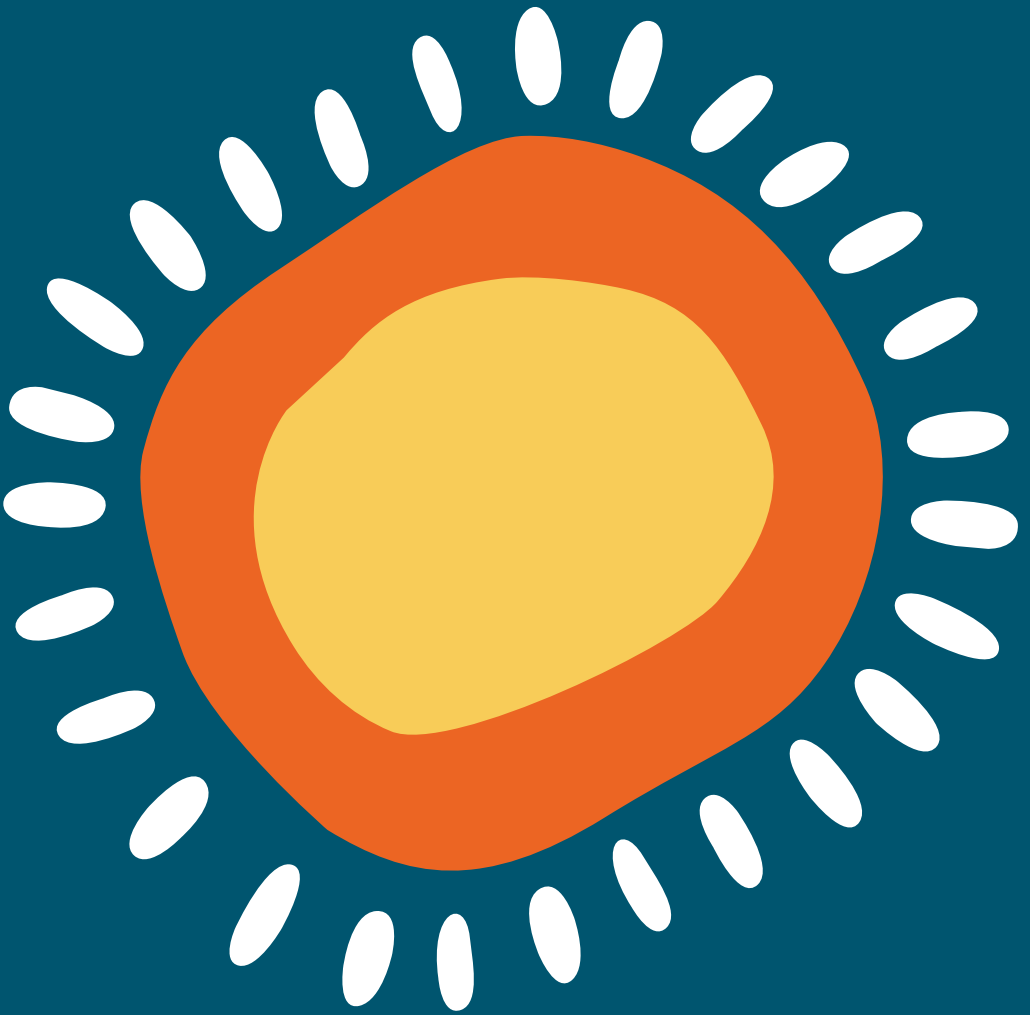
Law Matters Radio Program

ALSWA has produced and presented the fortnightly 'Law Matters' radio program since 2010. Broadcast live from 100.9FM Noongar Radio in Boorloo (Perth), Law Matters is repeated via the National Indigenous Radio Service (NIRS), Waringarri Media and 6DBY Larrkardi Radio. Archived programs are available to listen online via the ALSWA website **www.als.org.au**.

Media and Public Relations

ALSWA plays an active role in advocating and speaking out about the complex issues facing Aboriginal and Torres Strait Islander Peoples within the justice system. ALSWA services are widely promoted to ensure that community members have easy access to legal information and services.

Media Enquiries should be directed to ALSWA's Media and Public Relations Manager at **media@als.org.au**



Additional ALSWA Services

Custody Notification Service (CNS)

The Custody Notification Service (CNS) is a phone support service operating state-wide 24 hours per day, seven days per week that supports Aboriginal or Torres Strait Islander persons (adults and children) who have been arrested or apprehended by WA Police and detained in a police facility (irrespective of the reason).

CNS Lawyers and Aboriginal Support Workers are trained to carefully respond to the concerns of Aboriginal and Torres Strait Islander people and they will do everything they can to ensure police meet their duty of care to Aboriginal people taken into custody by:

- conducting a thorough and culturally competent welfare check;
- providing appropriate early fundamental legal advice; and
- referring Aboriginal and Torres Strait Islander people to the most appropriate services to address ongoing welfare and legal needs.



Additional ALSWA Services

Custody Wellbeing Service (CWS)

Located in the Perth Watch House, the Custody Wellbeing Service (CWS) provides in-person culturally secure support to Aboriginal people detained at the Perth Watch House. The Aboriginal CWS support workers assist detainees by:

- identifying immediate medical and other wellbeing needs;
- providing cultural counselling and mentoring;
- providing referrals to ALSWA services (for legal needs and supports) and to external services (where appropriate);
- supporting and facilitating contact with the detainee's family and/or other support persons as required.

The CWS Support Workers work onsite at the Perth Watch House from Monday to Thursday 4 pm to midnight.



Additional ALSWA Services

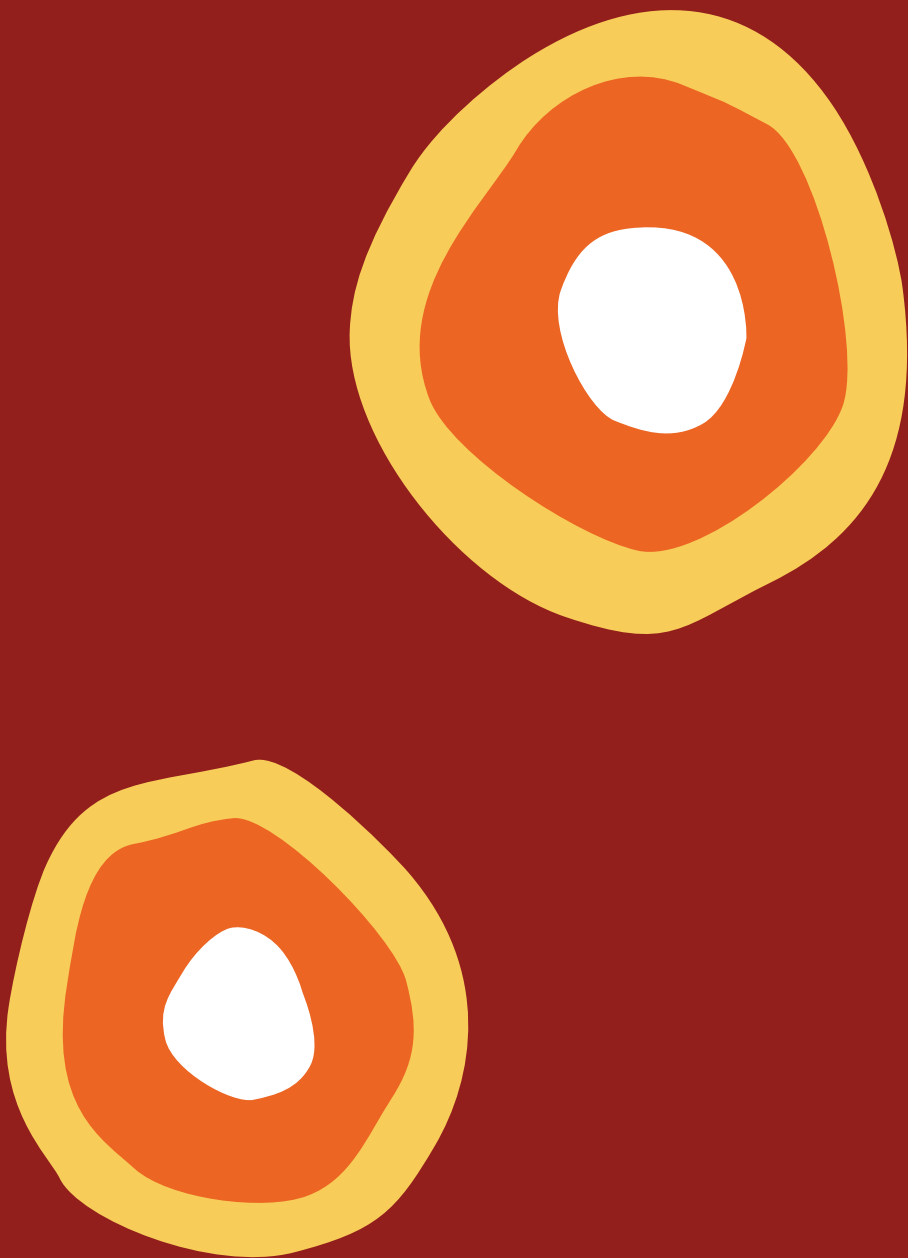
Old Ways New Ways (OWNW)

ALSWA leads the consortium for 'Old Ways New Ways' (OWNW), working collaboratively with Wadjak Northside Aboriginal Corporation, Stephen Michael Foundation Ltd and Hope Community Services Ltd.

OWNW is a justice reinvestment initiative designed to break the cycle of youth offending in the metropolitan region of Western Australia. Commencing in October 2024, OOWNW is funded under the National Justice Reinvestment Program until 30 June 2026.

The program includes culturally secure holistic case management as well as separate educational activity courses for males and females one day per week during school terms, on-country camps and community throughcare support via community hubs and mentors.

The aim of the program is to address the over-representation of young Aboriginal people in the criminal justice system, by assisting and supporting Aboriginal young people who are involved in or at risk of involvement in the criminal justice system.



Additional ALSWA Services

Work and Development Permit (WDP) Service

The Work and Development Permit (WDP) Scheme is an alternative way for people experiencing hardship to pay down court fine debt. It is delivered in partnership with the Department of Justice, ALSWA and Legal Aid WA. Under a WDP, a person can engage in a wide variety of programs, services, treatments and activities with support agencies (known as WDP Sponsors) and pay off their court fines at the same time.

ALSWA provides a WDP Service to support existing and potential culturally secure WDP Sponsors, as well as providing fines related advice to Aboriginal people and links to sponsors.

Additional ALSWA Services

Youth Engagement Program (YEP)

The Youth Engagement Program (YEP) provides holistic, culturally-secure, individualised and flexible support to ALSWA clients appearing in the Perth, Broome, Derby, Kununurra, Wyndham, Halls Creek and Fitzroy Crossing Children's Courts.

YEP Diversion Officers provide a range of support and services including:

- mentoring;
- court support;
- advocacy;
- referrals to external services;
- case management;
- transport assistance;
- support at appointments with various external agencies including Youth Justice Services;
- accommodation assistance;
- assistance to reengage in education and/or training;
- support to attend medical appointments and check-ups;
- practical help (such as obtaining birth certificates, Medicare cards, bank accounts and Centrelink payments); and
- participation in cultural and recreational activities.

The five YEP sites are:

- YEP-M (YEP Metro)
- YEP-WK (YEP West Kimberley)
- YEP-EK (YEP East Kimberley)
- YEP-HC (YEP Halls Creek)
- YEP-FC (YEP Fitzroy Crossing)

YEP is being expanded to Geraldton and is expected to commence in July 2025.



Additional ALSWA Services

Family and Domestic Violence Hubs

ALSWA supports two Family and Domestic Violence (FDV) Hubs/Healing Services:

- Waullo Dawn Healing Service and the Koolark Healing Service; and
- Mara Pirni Healing Place.

The Waullo Dawn Healing Service and the Koolark Healing Service are located in Armadale and operated by Hope Community Services Limited in partnership with Yorgum Healing Services, Ngala, Ishar Multicultural Women's Health Services, Women's Legal Service WA, Marmum Mia-Mia Aboriginal Corporation, 360 Health, Ruah Community Services and ALSWA. ALSWA provides a lawyer at the hub to provide legal advice and assistance to hub clients as well as referrals to other appropriate legal services where ALSWA is unable to assist.

In Kalgoorlie, the Mara Pirni Healing Place is operated by Hope Community Services Limited in partnership with Wanslea Family Services, Ngunytju Tjitji Pirni Aboriginal Corporation (NTP), One Tree Community Services and ALSWA. The ALSWA paralegal at the hub provides legal information to clients at the hub including warm referrals to appropriate legal assistance providers as well as undertaking community legal education.





The Aboriginal Legal Service of WA Limited acknowledges the Traditional Custodians of the land on which ALSWA offices stand. ALSWA acknowledges and respect the continuing culture and contributions that First Nations Peoples make to the life of these regions.

ALSWA PERTH (HEAD OFFICE)

7 Aberdeen St (Next to McIver Train Station)
Perth WA 6000

PO Box 8194
Perth Business Centre WA 6849

ALSWA OFFICE LOCATIONS

- Albany
- Broome
- Bunbury
- Carnarvon
- Derby
- Geraldton
- Halls Creek
- Kalgoorlie
- Kununurra
- Northam
- South Hedland

DONATIONS AND BEQUESTS

It is only through the goodwill of our supporters that ALSWA can adequately advocate, lobby and provide a strong voice nationally and internationally on the continued struggles and inequality faced by Aboriginal and Torres Strait Islander Peoples. For more information on how to donate to ALSWA please phone 08 9265 6666 or email Donations-Bequests@als.org.au

 Find us on Facebook [Aboriginal Legal Service of WA Limited](https://www.facebook.com/AboriginalLegalServiceofWALimited)  [aboriginallegalservicewa](https://www.instagram.com/aboriginallegalservicewa)

WA FREECALL 1800 019 900

Website www.als.org.au

Date of Print: July 2025

Disclaimer: The information contained in this publication is provided in good faith for information purposes only and does not constitute legal advice. The information is correct at the time of printing however the law and services provided may change at any time. The information is provided on the basis that all persons undertake responsibility for assessing the relevance and accuracy of the content. For legal advice please contact your nearest ALSWA office.

The Aboriginal Legal Service of WA Ltd gratefully acknowledges the support and financial assistance of: • The Commonwealth Department of the Attorney General (for baseline legal services funding and the Old Ways New Ways program); • The National Indigenous Australians Agency (for the Custody Notification Service (CNS) and the Youth Engagement Program (YEP) Expansion Project); • The WA Department of Justice (for the Custody Notification Service (CNS), Bail Support Service (BSS)/Prison In-Reach Service (PIR) Work and Development Permit (WDP) Service and the Youth Engagement Program (YEP) Metro and West Kimberley); • Hope Community Services for ALSWA paralegal at the Mara Pirni Healing Place and ALSWA lawyer at the South East Family and Domestic Violence (FDV) Healing Service; • WA Police Force for the Custody Wellbeing Service.

The ALSWA artwork and logo design by Mumbulla Creative captures the themes of justice, equality and truth, which are fundamental to our existence as First Nations Peoples.

