

ABORIGINAL LEGAL SERVICE OF WA (Inc) ("ALSWA")  
**2011 Election of Executive Committee**  
**Monday 23 May - Friday 27 May**



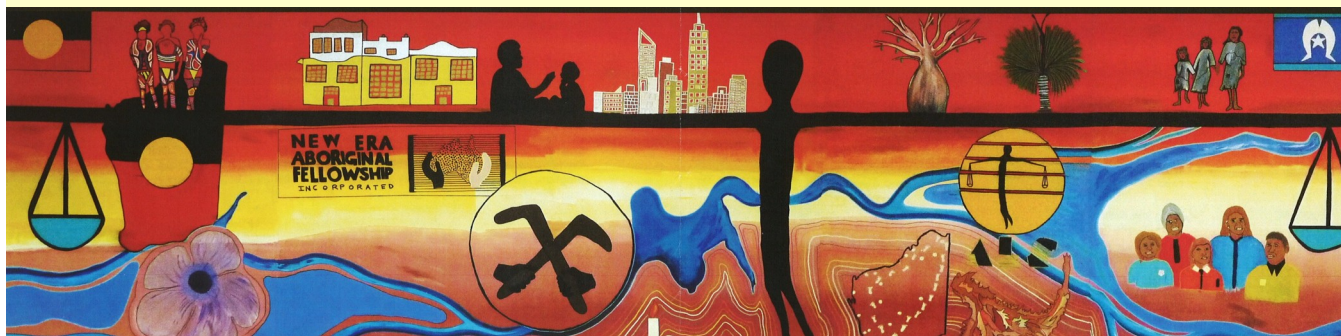
## **ALSWA EXECUTIVE COMMITTEE CANDIDATES**

### **MURCHISON / GASCOYNE REGION**

**Paul Baron, Clarence Cameron,  
Kathleen Musulin, Lorraine Whitby**  
*(Two to be elected)*

### **WHERE AND WHEN TO VOTE IN MAY 2011**

**Carnarvon** ALSWA Office 58 Robinson St 23 - 27 May 9.00am - 4.00pm  
**Meekatharra** ALSWA Office 7 Main Street 23, 26, 27 May 9.00am - 4.00 pm  
**Burringurrah** Community Office 24 May 10.00am - 1.00pm  
**Geraldton** ALSWA Office 73 Forrest Street 23 - 27 May 9.00am - 4.00pm  
**Northampton** RSL Hall 25 May 2.30pm - 4.30pm  
**Yalgoo** Shire Railway Complex 23 May 1.00pm - 4.00pm  
**Mount Magnet** Shire Offices 24 May 10.00am - 12.00pm  
**Cue** Community Resource Centre 24 May 2.00pm - 4.00pm  
**Mungullah** Village Office 23 May 2.00pm - 4.00pm  
**Wiluna** Aboriginal Medical Service 25 May 10.00am - 12.00pm  
**Mullewa** MEEDAC 23 May 9.00am - 12.00pm  
**Morawa** Lesser Hall 24 May 9.00am - 11.00am  
**Dongara** Shire of Irwin Offices 26 May 9.00am - 12.00pm  
**Three Springs** Shire Offices 26 May 2.00pm - 4.00pm



**ALL ENQUIRIES TO ALSWA RETURNING OFFICER PETER COLLINS ON  
1800 019 900. INFORMATION ALSO AVAILABLE AT [www.als.org.au](http://www.als.org.au)**  
Elections will be held in the Central, Southern, Murchison/Gascoyne, East Kimberley and West  
Kimberley Regions. **ABSENT VOTES** can be cast at any Polling place.  
*If you cannot vote in person, please request a **POSTAL VOTE Form** from ALSWA.*